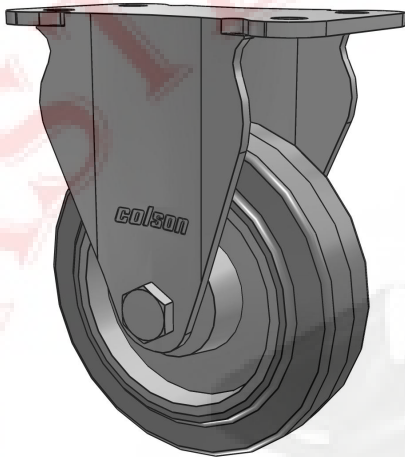


1 Series

1.03010.441

colson[®]

www.colsoncaster.com



Interactive 3D graphic, click to activate and rotate.
(3D capable PDF viewer required)

Colson Caster

Designed, tested and proven—for over 130 years. Since 1885, Colson's quality lines of industrial and institutional casters have defined the industry. Leading warranties and continuous innovations, including the unrivaled Performa wheel, have established Colson as one of the most trusted caster brands in the world today. Colson manufactures a wide array of quality casters—with over 200,000 product combinations available, and capacities ranging from 60 to 6,000 lbs. per caster.

Technical Details	
Part Number	1.03010.441
Series	1 Series
Fastening Type	Top Plate Rigid up to 75 lbs
Fastening Size	3" x 1 7/8"
Expanding Adapter Stem	N/A
Wheel Dia. [INCH]	3
Tread Width [INCH]	7/8
Tread Type	Performa Rubber (Flat/Gray)
Bearing Type	Delrin
Capacity [Pounds]	75
Temperature Range	-45°F to +180°F Intermittent Service (120°F Continuous Service)
Brake Type	N/A
Mount Height [INCH]	3 7/8
Swivel Rad. [INCH]	0
Weight [Pounds]	3/4
Thread Guard	None

Standard Features

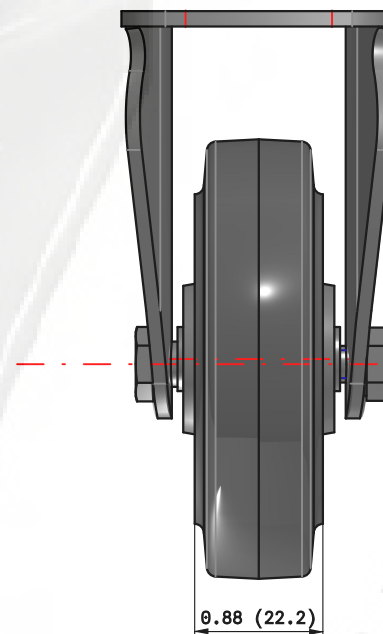
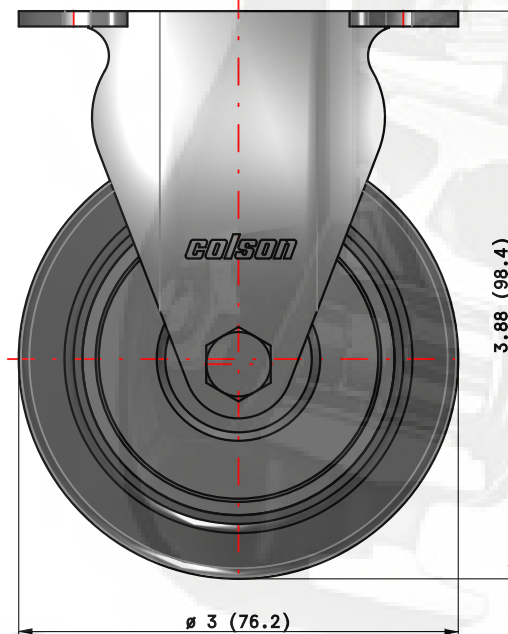
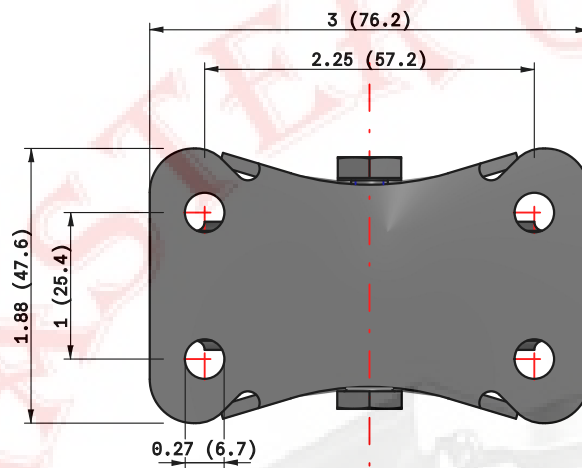
- Designed and constructed for trusted performance and long service life
- Industry leading 3-year warranty
- Full double ball hardened raceways provide better performance and greater durability
- "Colson 45" multi-temp grease lubricates in extreme hot and cold temperatures
- Top plate models feature .090" steel top plate for added strength
- 5/16" shouldered axle with 1/4" nut
- NSF listed (less thread guards)
- RoHS compliant zinc finish resists rust and corrosion



THE GLOBAL LEADER
IN CASTERS AND WHEELS

Colson Caster
3700 Airport Road
Jonesboro, Arkansas 72401

800-643-5515
870-932-4501
www.colsoncaster.com



colson

Part Number:

1.03010.441

Series:

1 Series

Brand:

Colson Caster

Colson Caster

3700 Airport Road • Jonesboro, Arkansas 72401

Phone: 800-643-5515 • 870-932-4501

Fax: 800-356-6708

Website: www.colsoncaster.com